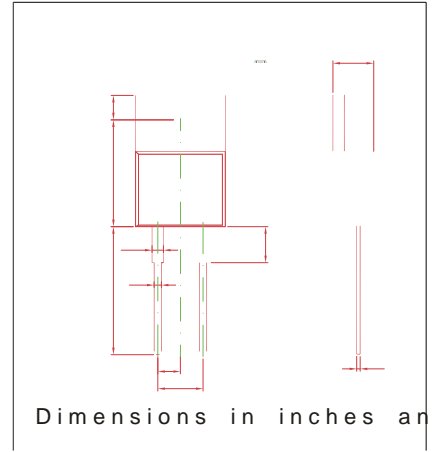


PD: 1.5W (T_a= 25 /)

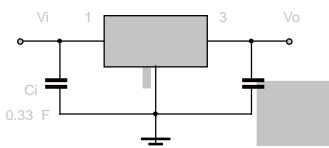
0 (&+\$1, &\$ / '\$7\$
 "&DVH 72 6PDOO 2XWOLQH 3ODVWLF 3DFNDJH
 "3RODULW\ &RORU EDQG GHQRWHV FDWKRGH HQG
 "ORXQWLQJ 3RVLWLRQ \$Q\



| 3 D U D P H W H U | 6 \ P E R O | 9 D O X H | 8 Q L W |
|--------------------------------------|------------------|-----------|---------|
| Input Voltage | V _i | | V |
| Thermal Resistance Junction to Case | R _{JA} | | / /W |
| Operating Junction Temperature Range | T _{OPR} | a 125 | / |
| Storage Temperature Range | T _{STG} | -65 a 150 | / |

V/Vo

Pulse test.



Note: Bypass capacitors are recommended for optimum stability and transient response and should be located as close as possible to the regulators.

